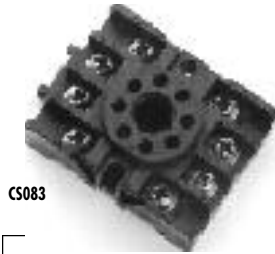


3 SECTION 8 IP20 RELAY SOCKETS/MODULES

Compact 8-11 Pin Commercial Relay Bases

Features

- Din rail (EN50022) or chassis mount
- Screw driver din release clip
- Captive washers for ease of wire insertion
- Accepts fork, ferule and ring terminals (ring for non IP20 only)
- 2 x 14 AWG / 2.5mm² max wire size
- IP20 finger protection types
- Relay retaining clip
- Slotted mounting holes for common fixing centres
- Tubular contacts for reliability
- Dual terminal numbering to IEC 67 & DIN 46 199

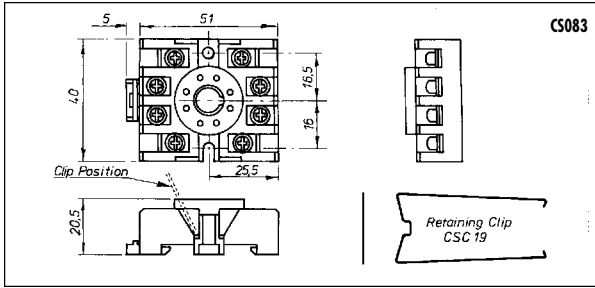


CS083

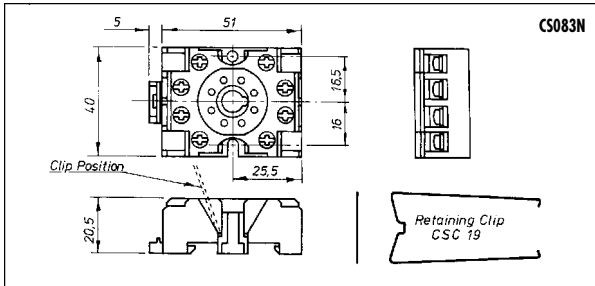
Type No	Description
CS083	8 pin open
CS083N	8 pin IP20 finger protection
CSC19	Retaining clip



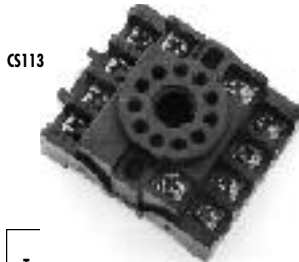
CS083N



CS083

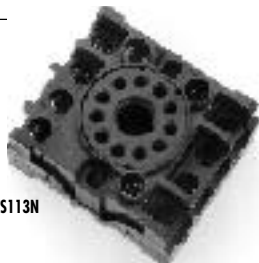


CS083N

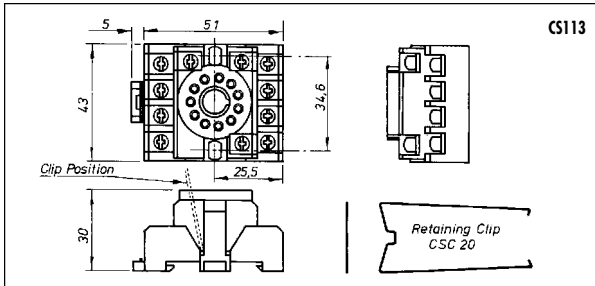


CS113

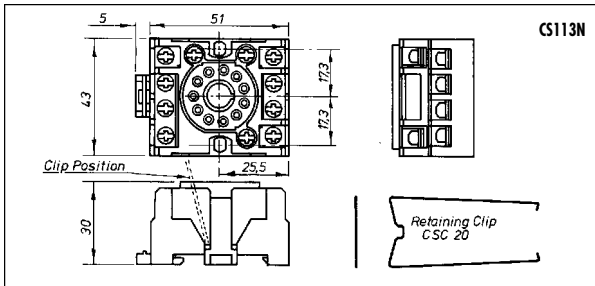
Type no	Description
CS113	11 pin open
CS113N	11 pin IP20 finger protection
CSC20	Retaining clip



CS113N



CS113



CS113N

Specification

Rating:	10A/600VAC
Dielectric strength:	>2kV
Working temperature:	110°C
Short period:	135°C
Moulding:	UL94-V1 Self extinguishing glass filled PPO
Contacts:	Tin plated brass
Screws:	6µ zinc and colour passivated and tropicalised steel M3.5 combination head
Approved:	, ,