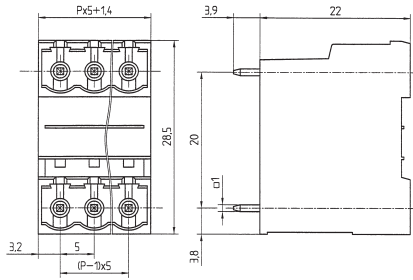
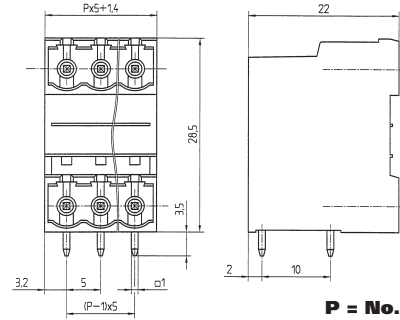


### STL 975 VERTICAL

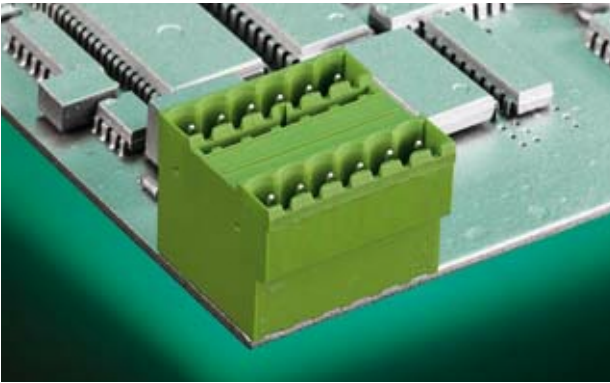


**P = No. of poles**

### STL 975 HORIZONTAL

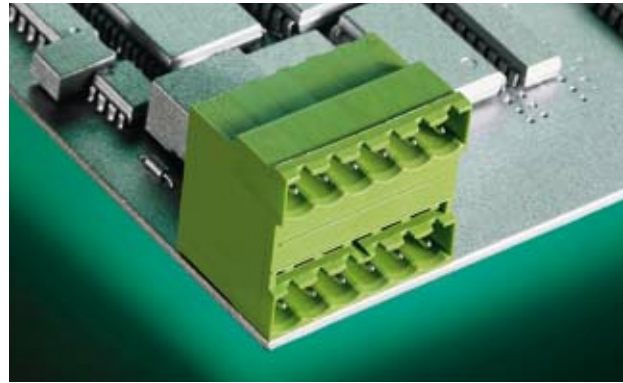


**P = No. of poles**



**STL 975/.. G - 5,0 - V - green**




**2-24 poles, Spacing 5,0 mm  
insert required no. of poles ..**






**STL 975/.. G - 5,0 - H - green**

**2-24 poles, Spacing 5,0 mm  
insert required no. of poles ..**

#### Ratings:

			
	UL 1059	CSA 22.2 No. 158	DIN VDE 0627
Rated Voltage	300 V	300 V	250 V
Rated Current	15 A	15 A	12 A (T60)
Rating Impulse Voltage/Dirt Level			4 kV/3

#### Ratings:

			
	UL 1059	CSA 22.2 No. 158	DIN VDE 0627
Rated Voltage	300 V	300 V	250 V
Rated Current	15 A	15 A	12 A (T60)
Rating Impulse Voltage/Dirt Level			4 kV/3

#### Dimensions

Spacing	5,0 mm
PCB Hole Diameter	1,4 mm

#### Materials

Insulating Material	PA
Flammability Class	UL94 V-0
Temperature Range	-30°C/+105°C
Contact Pin	Cu

Colour  
green

RAL 6018

#### Dimensions

Spacing	5,0 mm
PCB Hole Diameter	1,4 mm

#### Materials

Insulating Material	PA
Flammability Class	UL94 V-0
Temperature Range	-30°C/+105°C
Contact Pin	Cu

Colour  
green

RAL 6018