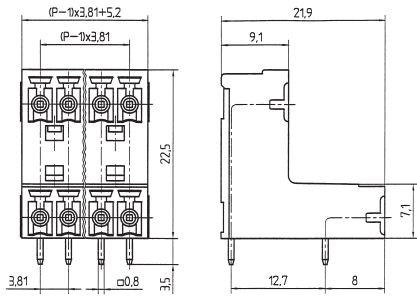
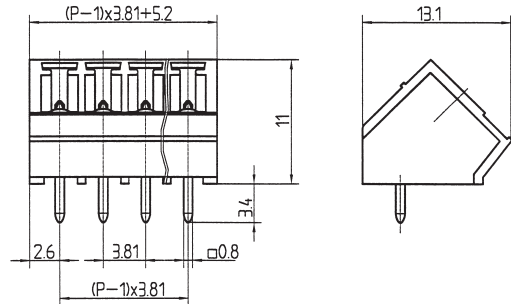


STLZ 1570 HORIZONTAL



P = No. of poles

STLZ 1590

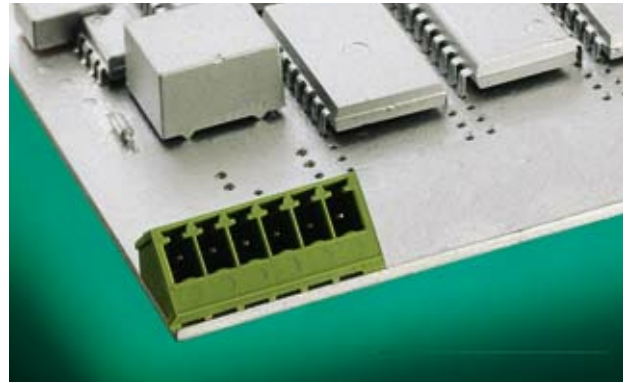


P = No. of poles



STLZ 1570/.. G - 3,81 - H - green




**2-20 poles, Spacing 3,81 mm
insert required no. of poles ..**






STLZ 1590/.. G - 3,81 - green

**2-20 poles, Spacing 3,81 mm
insert required no. of poles ..**

Ratings:

			
	UL 1059	CSA 22.2 No. 158	DIN VDE 0627
Rated Voltage	300 V	300 V	160 V
Rated Current	8 A	8 A	9 A (T60)
Rating Impulse Voltage/Dirt Level			4 kV/3

Ratings:

			
	UL 1059	CSA 22.2 No. 158	DIN VDE 0627
Rated Voltage	300 V	300 V	160 V
Rated Current	8 A	8 A	9 A (T60)
Rating Impulse Voltage/Dirt Level			4 kV/3

Dimensions

Spacing	3,81 mm
PCB Hole Diameter	1,2 mm

Materials

Insulating Material	PA
Flammability Class	UL94 V-0
Temperature Range	-30°C/+105°C
Contact Pin	Cu

Colour
green

RAL 6018

Dimensions

Spacing	3,81 mm
PCB Hole Diameter	1,2 mm

Materials

Insulating Material	PA
Flammability Class	UL94 V-0
Temperature Range	-30°C/+105°C
Contact Pin	Cu

Colour
green

RAL 6018